

SINTO RED

ST-PE Polyester
ETA Certified

Dual component polyester resin (styrene free), certified ETA-CE option 7.

Suitable Anchors:

- Steel 5.8, 6.8 and 8.8 grade zinc and galvanised
- Stainless Steel A4 70 according to EN ISO 3506
- M8 to M16

Applications:

- Signs
- Partitions
- HVAC
- Electrical switchboards
- Infrastructure construction: sound barriers, crash barriers, high rise construction, roads and bridges
- Production facilities (conveyor lines, cranes etc)

Advantages:

- ETA Certified for Non Cracked Concrete
- Volatile Organic Compound (Low VOC) rating A+
- No shrinkage after curing time
- Reduced anchors spacing and edge distance
- Quick setting and curing times
- Easy and quick to use

| | |
|-----------------|---------------|
| Item Code | DGE 01 00 300 |
| Contents (ml) | 300 |
| Pcs. per Box | - |
| Pcs. per Carton | 12 |



European Technical Assessment
ETAG 029 - use category: b,c & w/d
DoP available on www.tecfi/DoP



European Technical Assessment
ETAG 001 - PART 1 and 5
OPTION 7: for non-cracked concrete -
Threaded rods M8-M16
DoP available on www.tecfi.it/DoP



Item included in **TADS - Tecfi Anchor Design Software** for computer aided design of Anchorage.



THE NEW STANDARD
IN NEW ZEALAND
CONCRETE FIXING

SINTO RED

ST-PE Polyester
ETA Certified

How To Use Sinto Red ST-PE Chemical Anchor and Product Details

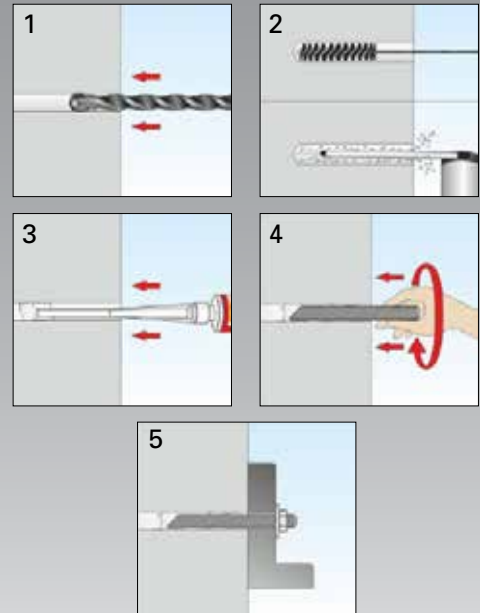
Tecfi Sinto Red Styrene-free Polyester resin bonded anchor (injection type), achieved the ETA-CE Certification Option 7, for use in non cracked concrete, size M8-M16 and for use in solid and hollow masonry (use category b and c), size M8-M12; Sinto Red ST-PE chemical anchor is certified for both concrete and masonry.

Sinto Red consists of a dual component, styrene free polyester based chemical mortar; the load-bearing capacity is due to the interaction of the rod, the chemical mortar and the base material (it can be used on different base materials such as concrete, solid masonry and wood).

This resin does not pre-stress the base material, allow for anchorage with reduced edge distances and minimum spacing. The special, low VOC (A+ classification) formulation allow the use of Sint Red in indoor environments; tested in accordance with LEED EQ-4.1. The polyester resin can also be used in dry and wet concrete; Sinto Red ST-PE chemical anchor does not need premixing, because the resin and the hardener are self-mixed in the nozzle during the extrusion.

| Property | Value |
|--|-----------------------------|
| Concrete Temperature | 0° to 30°C |
| Service Temperature | -40°C to +50°C |
| Working Time @ 20°C | 6 minutes |
| Loading Time @ 20°C (Dry) | 45 minutes |
| Recommendations on packaging, transport and storage | +5°C to not more than +30°C |
| Refer to relevant ETA certificates for further information & performance declarations. | |

Installation procedure:



Related products:



EXO41

High performance
4 cutter sds-plus



DAF72

Hex shank
chemical anchor
stud

THE NEW STANDARD
IN NEW ZEALAND
CONCRETE FIXING