

SINTO BLUE

ST-VE Vinylester ETA Approved High Strength

Dual component vinylester resin (styrene free), certified ETA-CE option 1 and option 7, fast cure, non sag for threaded rod and rebar.

Suitable Anchors:

- Galvanised carbon steel
- Stainless Steel A4-70, A4-80 or high corrosion resistant stainless steel
- M8 to 32mm

Applications:

- Post installed rebar
- Structural steel anchoring
- Safety barriers
- Balustrades and guard rails
- Infrastructure construction: bridges, roads, high rise construction
- Production facilities (installation of cranes, robots, conveyor lines etc)

Advantages:

- Certification ETA – CE Option 1, Option 7, ETAG 001 – Part 1 and Part 5 – TR023
- Excellent for applications with rebar
- ETA approved for use in non cracked concrete
- Can be used in wet or flooded holes
- Volatile Organic Compound (Low VOC) rating A+
- Heavy-duty loads
- Almost no shrinkage after curing time
- Reduced anchors spacing and edge distance
- Quick setting and curing times
- Easy and quick to use

Item Code	DGE 02 00 400	DGE 02 00 300
Contents (ml)	400	300
Pcs. per Box	-	-
Pcs. per Carton	12	15



European Technical Assessment
ETAG 001 - PART 1 and 5 - TR023
Post-Installed Rebar Connections
- Rebars Ø8-Ø32

DoP available on www.tecfi/DoP



European Technical Assessment
ETAG 001 - PART 1 and 5

OPTION 1: for cracked and non-cracked concrete - Threaded rods M10-M12
OPTION 7: for non-cracked concrete - Threaded rods M8-M16

DoP available on www.tecfi.it/DoP



Item included in **TADS - Tecfi Anchor Design Software** for computer aided design of Anchorage.



THE NEW STANDARD
IN NEW ZEALAND
CONCRETE FIXING

SINTO BLUE

ST-VE Vinylester ETA Approved High Strength

How To Use Sinto Blue ST-VE and Sinto Blue ST-VE Chemical Anchor and Product Details

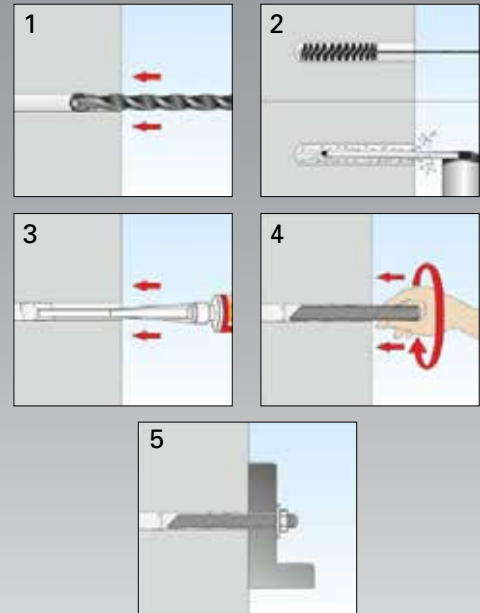
Sinto Blue Vinylester resin styrene free is a bonded anchor (injection type), ETA approved for use in non-cracked concrete. The chemical anchor consists in a chemical mortar cartridge equipped with a special mixing nozzle, to be used with an injection gun, and the load-bearing capacity is due to the bonding of the rod (or rebar), the chemical mortar and the concrete.

The bonded anchor Sinto Blue ST-VE is intended to be used in reinforced or non reinforced concrete of strength class C20/25 to C50/60, according to EN 206-1, with threaded anchor rods (sizes M8 to M24) in galvanized carbon steel, stainless steel A4- 70, A4-80, HCR stainless steel of property class 70, or for the post installed rebars, according to TR023.

The threaded rod is installed with a slow and slight twisting motion into a carefully cleaned drill hole, previously filled with the chemical mortar. The anchor is to be used in non-cracked concrete only and installed in dry or wet concrete (use category 1) or in flooded holes with exception of seawater (use category 2, for threaded rod only, not for rebars).

Property	Value
Concrete Temperature	0° to 30°C
Service Temperature	-40°C to +80°C
Working Time @ 20°C	7.5 minutes
Loading Time @ 20°C (Dry)	40 minutes
Recommendations on packaging, transport and storage	+5°C to not more than +30°C
Refer to relevant ETA certificates for further information & performance declarations.	

Installation procedure:



Related products:



EXO41

High performance
4 cutter sds-plus



DAF72

Hex shank
chemical anchor
stud

THE NEW STANDARD
IN NEW ZEALAND
CONCRETE FIXING