

HXE01

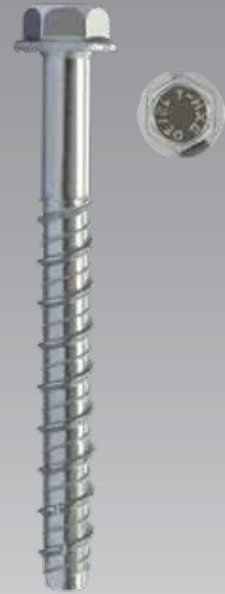
Concreto

Patented hexagonal flanged washer head with serration concrete screw, zinc plated, ETA-CE Opt.1 certified. Performance Category C2-C1 for use under seismic action.

Advantages:

- ETAG 001 Part 1 and 3 and ANNEX E
- ETA OPTION 11 for cracked and non-cracked concrete
- C1 and C2 seismic assessment
- Fire rated R120
- Simply drill and drive - Time efficient installation through streamlined procedure
- Integral washer ensures a neat overall appearance
- Unique design with patented threadform ensures high performance
- Non-expansion functioning ensures low risk of damage to base material
- For use with concrete, brick and block

- ✓ -30% Distance from the edges and between anchors *
- ✓ + 35% Characteristic load at extraction *
- ✓ + 30% Characteristic cutting character *



European Technical Assessment
ETA-11/0336 - ETAG 001 - PART 1 - 3 and ANNEX E
OPTION 1: cracked and non-cracked concrete.
Seismic assessment - performance category C2 - C1.



Item included in **TADS - Tecfi Anchor Design Software** for computer aided design of Anchorage.

THE NEW STANDARD
IN NEW ZEALAND
CONCRETE FIXING

HXE01

Concrete

Our Range:

HXE01

Hexagonal head screw with a flanged washer for fixing to concrete, ETA-CE certified option 1 and Performance Category C2 and C1 for seismic zone fixing.

HXE02

Double thread screw (metric + special patented) for fixing to concrete, with hexagonal shank, complete with nut and washer, in galvanized steel, ETA-CE certified option 1.

HXE12

Double thread screw (metric + special patented) for fixing to concrete, with hexagonal shank, complete with nut and washer SERIE LARGA, in galvanised steel, ETA-CE certified option 1.

HXE85

Double thread screw (metric + special patented) for fixing to concrete, with hexagonal shank, in galvanised steel, ETACE certified option 1.

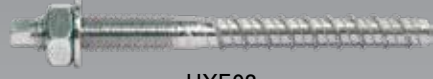
HXE03

Screw Flat Head Countersunk 6-lobe impression, in galvanised steel, for fixing on concrete, ETA-CE certified option 1.

Item Code	Description	Drill diam. mm	Pcs. per Box	Pcs. per Ctn
HXE 01 10 080	8 x 80mm	8	50	500
HXE 01 10 100	8 x 100mm	8	25	250
HXE 01 10 120	8 x 120mm	8	25	250
HXE 01 10 140	8 x 140mm	8	50	250
HXE 01 10 160	8 x 160mm	8	25	250
HXE 01 12 090	10 x 90mm	10	25	250
HXE 01 12 110	10 x 110mm	10	25	250
HXE 01 12 130	10 x 130mm	10	25	250
HXE 01 12 150	10 x 150mm	10	25	250
HXE 01 12 190	10 x 190mm	10	20	100
HXE 01 12 210	10 x 210mm	10	20	100
HXE 01 12 250	10 x 250mm	10	15	75
HXE 01 12 290	10 x 290mm	10	15	75
HXE 01 16 130	14 x 130mm	10	10	100
HXE 01 16 150	14 x 150mm	14	10	100
HXE 01 16 180	14 x 180mm	14	10	100



HXE01



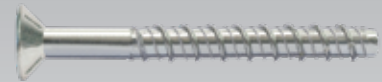
HXE02



HXE12

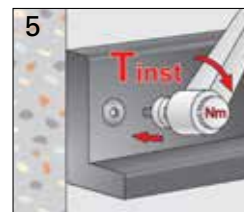
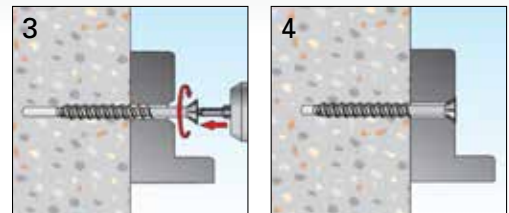
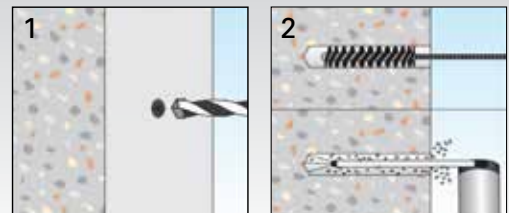


HXE85



HXE03

Installation procedure::



THE NEW STANDARD
IN NEW ZEALAND
CONCRETE FIXING